


## Human Leptin Protein

Cat #: PRP1038

Size: 100µg/1mg

### Product Information

	<b>Product Name:</b> Human Leptin Protein		
<b>REF</b>	<b>Catalog Number:</b> PRP1038	<b>LOT</b>	<b>Lot Number:</b> Refer to product label
	<b>Purity:</b> > 98 % as determined by SDS-PAGE		
	<b>Storage:</b> Store at -20 °C		<b>Preparation method:</b> E. coli
	<b>Shipping:</b> The product is shipped at ambient temperature.		

**Background:** Leptin is a hormone secreted by adipose tissue, and its content in the serum is proportional to the size of the animal adipose tissue. It acts on leptin receptor located in the central nervous system to regulate the behavior and metabolism of organisms. When the body fat is reduced or in a state of low energy (such as hunger), the content of leptin in the serum will decrease significantly, thus stimulating the foraging behavior and reducing its own energy consumption. Conversely, when an organism's body fat increases, serum leptin levels rise, which inhibits eating and accelerates metabolism. Leptin regulates energy balance and body weight through such a negative feedback mechanism.

**Sequence:** Amino acid sequence derived from Human Leptin Protein (Val22-Cys167) was expressed.

**Protein length:** The recombinant Human Leptin Protein consists of 146 amino acids with a Met in N terminal and predicts a molecular mass of 16 kDa.

**Biological Activity:** Testing in progress.

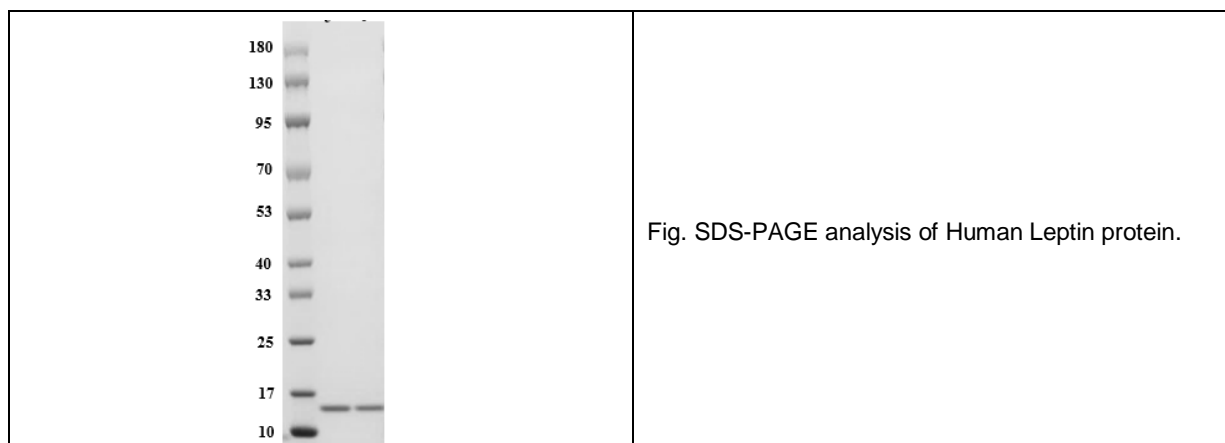
**Endotoxin:** < 1 EU per µg of the protein as determined by the LAL method.

**Formulation:** Lyophilized from sterile 20 mM Tris with 150 mM NaCl, pH 7.4.

**Storage Instructions:** Lyophilized recombinant Human Leptin protein product should be stored desiccated below -20°C. Upon reconstitution, the protein should be stored at 4°C between 2-7 days and for future use below -20°C. For long term storage it is recommended to add a carrier protein (0.1% HSA or BSA). Please prevent freeze-thaw cycles.

**Usage notes:** Always centrifuge tubes before opening. It is recommended to reconstitute the lyophilized recombinant Human Leptin protein using the buffer we provided not less than 100 µg/ml, which can then be further diluted to other aqueous

solutions.



**Note:** The product listed herein is for research use only and is not intended for use in human or clinical diagnosis. Suggested applications of our products are not recommendations to use our products in violation of any patent or as a license. We cannot be responsible for patent infringements or other violations that may occur with the use of this product.